

CREATING CORRIDORS OF CONNECTED WILDERNESS

Spring Peeper. T. Rowland.

The Couchiching Conservancy has made major strides in preserving vital habitat, but the challenge has never been greater because of tremendous development pressure on our region. Ask yourself, what will be saved for future generations? How will our beloved species like Moose and Great Blue Heron sustain themselves? The Conservancy and our supporters are looking ahead with a detailed acquisition and protection strategy which focuses on creating corridors to make the biggest impact in protecting crucial habitat and threatened species.

The creation of wildlife corridors has also become more urgent in the face of a rapidly changing climate. Corridors of protected wilderness matter. These are the bridges for species to move. Corridors reduce fragmentation, which has a big impact on species survival and many Canadian provinces could become 'climate refuges' for animals heading north to escape rising temperatures. We are working towards connecting some of the wildest spaces left in Ontario.

The Corridors Campaign is a concentrated effort to protect and steward important natural habitat East of Lake Couchiching – the Black River Wildlands and Carden Alvar regions. This campaign is the largest capital campaign in the Conservancy's history with a goal to raise \$1.4 million and in turn protect a land value of an estimated \$4.5 million.


The purpose of the Campaign is to raise money today so that Conservancy is in a position to act quickly when opportunities arise in this area. Your donation or pledge to the Campaign secures your belief in this work, and trust in what we are working towards together.


"I am very proud of our natural areas and our vast wilderness. I believe it is our responsibility as Canadians to preserve these natural areas for many reasons including – protecting biodiversity, reducing the impacts of climate change and protecting them for future generations to enjoy."

- Doug Varty, Development Committee Chair

4,000 
additional acres we
are working to protect
by 2025

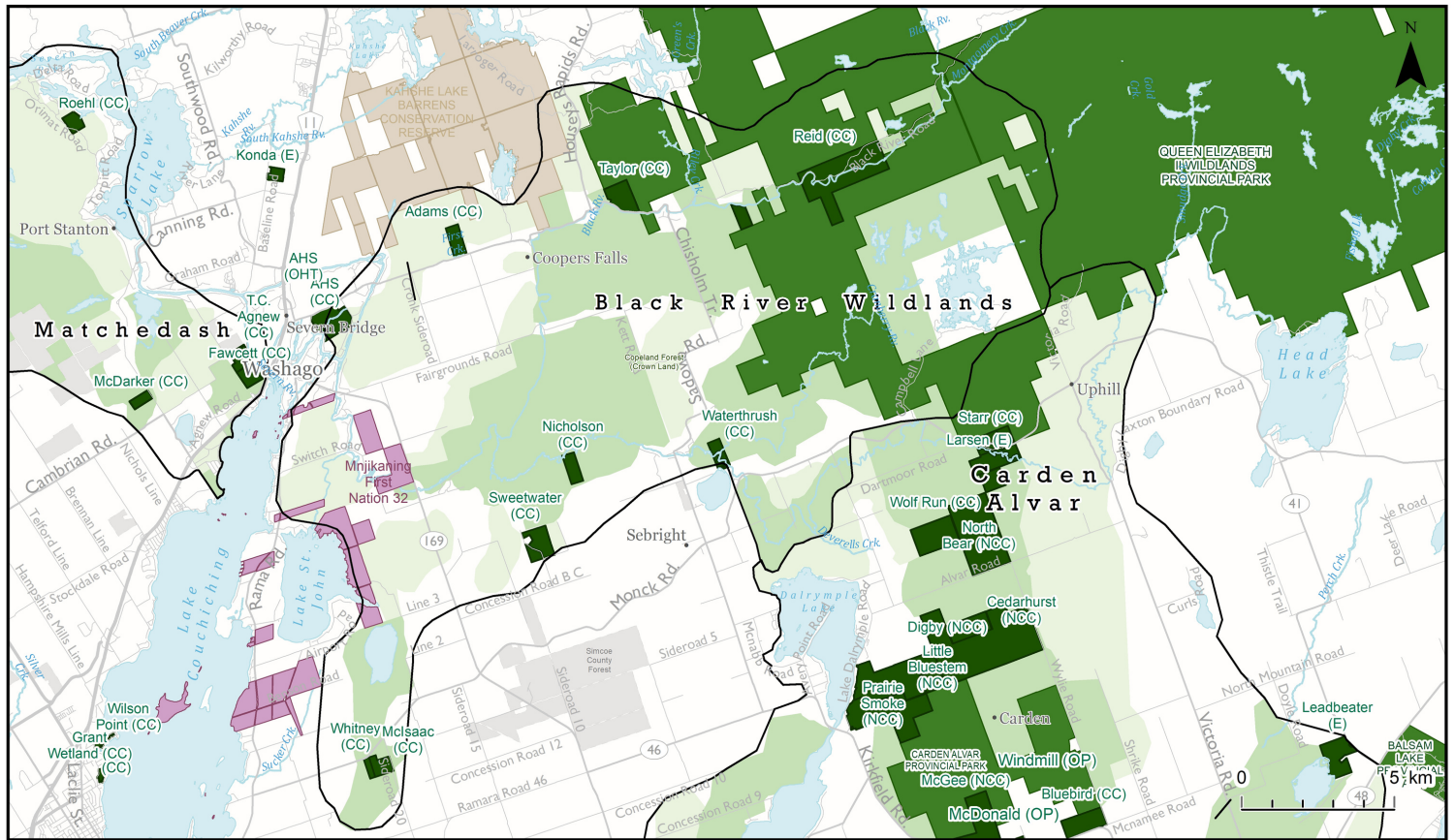
1,929 
acres of wilderness
protected since 2019

49 
species at risk of
disappearing forever

Values 
Carbon sink, species
migration, linkages to
other protected areas

Habitat 
Canadian Shield & the
Great Lakes Lowlands,
with rich wetlands,
Alvar, Grasslands

PUTTING THE PIECES TOGETHER



- Nature Reserve - Couchiching Conservancy (CC), Easement (E), Nature Conservancy of Canada (NCC), Ontario Heritage Trust (OHT)
- First Nations Reserve
- Conservation Reserve (Ontario Parks)
- Provincial Park (Ontario Parks)

- Simcoe County Forest Tract
- Priority 1 Zone
- Priority 2 Zone
- Conservation Corridor

The Couchiching Conservancy

Author: The Couchiching Conservancy, 8/31/2022. Coordinate System: NAD 1983 UTM 17 N; Projection: Transverse Mercator. Data: Land Information Ontario, Couchiching Conservancy/ 2021. Priority areas and conservation corridors conceptualized by Ron Reid and digitized by Kawartha Conservation and the Couchiching Conservancy. Contact for details. This is NOT a plan of Survey and is not for planning or legal use. Do not rely on for navigation.

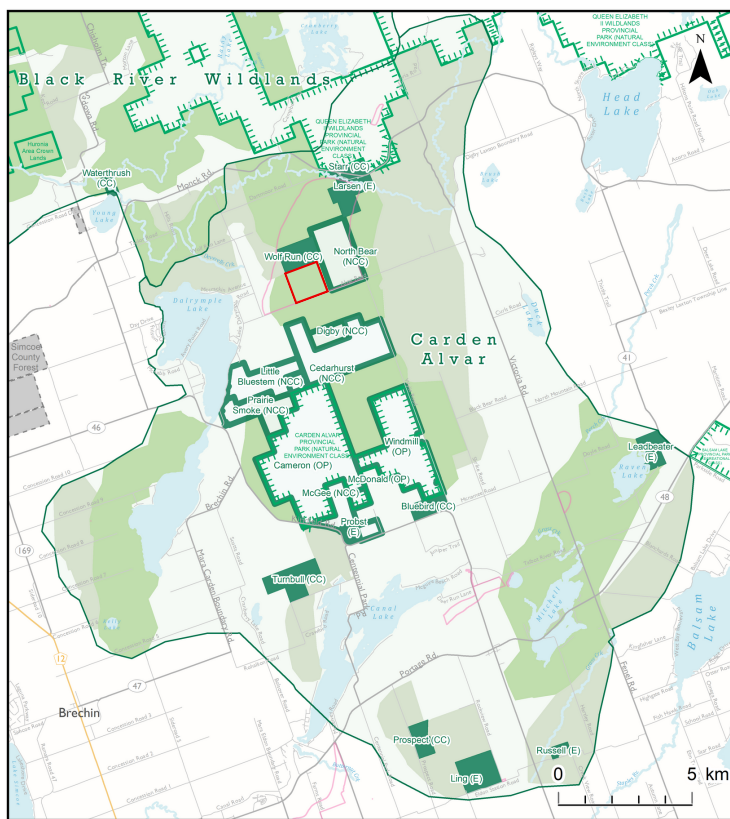
\$1.4
million fundraising
target could translate
into as much as ~\$4.5
million in protected
land value

The Conservancy is currently working with a number of land owners to protect these important pieces of the puzzle through various tools such as land donation, easements and more.

Your donation to the Corridors Campaign empowers the Conservancy to move forward vital protection projects throughout this region.

~\$920K
donated and pledged
as of Sept. 2022 by
people committed to
protecting nature

Protecting nature for future generations
www.couchichingconserv.ca



CURRENT OPPORTUNITY: THE MORTON ALVAR

This property falls within a priority 1 zone of the Carden Alvar corridor as set out by the current acquisition strategy. It also falls completely within the Carden Alvar Area of Scientific Natural Interest and is directly adjacent to Wolf Run NR (CC) along the Northern boundary and North Bear NR (NCC) along the Eastern boundary.

Species found in the corridor include species at risk such as the Red-headed Woodpecker, Eastern Whip-poor-will, Eastern Milksnake, Western Chorus Frog and many more.

400 
acres

PROTECTED THANKS TO CORRIDORS CAMPAIGN SUPPORTERS

2021:

- Nicholson NR, 100-acres (BRW)
- Leida and Roman Marley NR, 77-acres (BRW)
- Cedarhurst Alvar NR, 1,362-acres (CA)

BRW: Black River Wildlands CA: Carden Alvar

2020:

- Taylor NR, 175-acres (BRW)

2019:

- Whitney Wetland NR, 30-acres (BRW)
- Sweetwater Farm NR, 185-acres (BRW)