



Kris Starr Sanctuary frog monitoring site, 2023

---

Greetings!

I hope you had a nice long weekend!

Daytime frog monitoring is wrapping up for the year and evening frog monitoring is about midway through the monitoring season.

Whether you are submitting using paper or using Landscape, it is important to ensure that your data gets to us. Even if you didn't hear any frogs while monitoring, please still send us a monitoring report for that visit. This helps us learn more about what conditions and times of year frogs are more likely to call. This newsletter will provide some tips for submitting data and what to do if you missed a monitoring visit.

Please do not hesitate to get in touch with any questions or concerns, or if you would like a staff member to accompany you for monitoring.

Thank you to everyone who has already started to submitted their data, and I look forward to looking through all of your reports.

Best,

Aiesha

Having trouble viewing this email? [View as Webpage](#)

---

● ● ●

## Useful Resources and Links

### Resources for monitoring:

- [Printable Monitoring Form](#)
- [Landscape Online Portal](#) - submit data online (optional)
- [Landscape Guide for Frog Monitors](#) - printable guide for Landscape users
- [Volunteer Resources Page](#)

## Just for fun:

- [Merlin](#) - an app for bird identification
- [Seek](#) - an app for plant and visual species identification
- [Become a Couchiching Conservancy Member](#)

## Data Submissions

Whether you are using paper or Landscape, please email me to let me know when you submit your data so that I know to look for it.

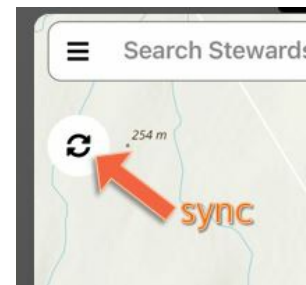
### Paper monitoring forms

If you are submitting paper monitoring forms, please drop them off to our office within a few days of doing the monitoring. This allows us to know that you did your visit and helps us stay on-top of data entry.

### Landscape

If you are using Landscape, press the sync button in the app so that your data syncs to the online portal. If you do not sync, the information is only on your phone and I cannot see it from my end.

[Here](#) is a printout with a useful guide on how to use Landscape.



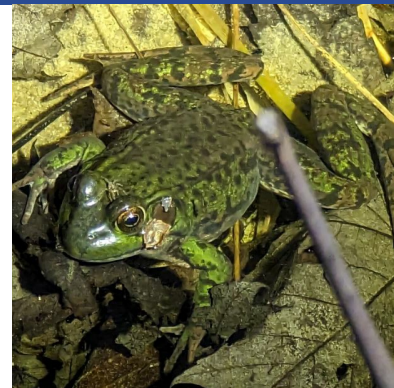
There is also a video tutorial on [EdApp](#) called Landscape Mobile

**Need help?** Email me ([aiesha@couchconservancy.ca](mailto:aiesha@couchconservancy.ca)) to set up a 30-minute help session over Zoom or in-person

## If you missed a visit

**Daytime frog monitors:** The daytime frog monitoring season does not run too far past mid-May. If you have not made all three visits yet, please do so soon. Just be sure to leave 24 hours between visits and to monitor when the daytime temperature is above 10°C

**Evening frog monitors:** If you missed the first threshold (6-10°C) visit, keep an eye out for a cooler night to make-up that visit. If you haven't already done so, it is now warm enough to plan your second threshold visit for a night when it is 11-17°C.



Green frog at Whitney Wetland. Photo credit: Cynthia Ferris

## Notes from the field



Often, while doing their monitoring, volunteers come across wildlife that they weren't searching for. These incidental observations are valuable and help us learn more about the species present at Nature Reserves in the region.

During their April 11 daytime Frog Monitoring visit, Morris and John came across a moose, a fisher, and Eastern bluebirds at Bluebird Ranch.

Above: A moose posing for the camera. Photo credit John F. Wright.

[Read more notes from the field](#)

## Merch

We now use a platform called Redbubble for our merchandise. Pick the design of your liking and then you get to choose what to put it on! We have T-shirts, mugs, sweaters, tote bags and more! We also have some items available for purchase through our office.



[Click here to view the merch](#)

## Connect with us

- help with EdApp
- help with Landscape
- frog monitoring questions
- species ID
- someone to monitor with



**Aiesha Aggarwal**



**Alysha Henry**

Conservation Analyst  
[aiesha@couchconservancy.ca](mailto:aiesha@couchconservancy.ca)  
Phone: 705-238-1811

Youth Stewardship Coordinator  
[alysha@couchconservancy.ca](mailto:alysha@couchconservancy.ca)  
Phone: 705-326-1620

---

**You are receiving this email because you are a Frog Monitor with The Couchiching Conservancy. Please let us know if things have changed and you can no longer volunteer, or do not wish to receive these emails.**

The Couchiching Conservancy | [couchichingconserv.ca](http://couchichingconserv.ca)

