

Trail Guide

Listed in the below table are the Nature Reserves and Easements that have trails that are open to the public to visit. A link to a PDF map is attached which can be downloaded and used in navigation apps such as Avenza. Or all maps are included in this document and the page number is included so you can quickly scroll to the page you want.

Trail Rating

1 - EASY (relatively flat trail); 2 - MODERATE (some elevation, rocky areas); 3 - DIFFICULT (tricky areas to navigate)

Region: Orillia & Area

Reserve	KM	Rating	Acres	Ⓟ	Why you'll love it here:	Map
Scout Valley (City of Orillia) Est. 2008	5.5	2	230	2 parking lots	Three loop trails 2 km each. Rolling woodlands of pine and hardwood with scattered wet areas and wetlands.	Page 4 or Link to map
Grant's Woods Est. 2004	4	1	52	Lot (15 spots)	Towering canopy of lush mature forest. Trillium growth as well as many other flowers. Seasonal washroom and one trail is wheelchair accessible . A popular trail!	Page 5 or Link to map

Region: Oro-Medonte

NCC = Nature Conservancy of Canada

Reserve	KM	Rating	Acres	Ⓟ	Why you'll love it here	Map
Carthew Bay Est. 2002	1	1	22	Road	A quiet trail through a mix of forest, significant wetland and meadow. Home to an active beaver pond with possible sightings of Great Blue and Green Herons.	Page 6 or Link to map
Church Woods Est. 2007	1.4	1	25	Lot or road	View 33 species of trees including old growth hardwoods and woodland of wildflowers and ferns. Seasonal streams and wetlands.	Page 7 or Link to map
East Coulson Swamp (NCC)	1.3	1	87	Lot or road	Surrounded by upland forest as well as headwaters for the Coldwater River. Home to forest interior birds such as Scarlet Tanager, Wood thrush and Black-throated Green Warbler.	Page 8 or Link to map

Region: Black River Wildlands

Reserve	KM	Rating	Acres	Ⓟ	Why you'll love it here:	Map
Adams Est. 2017	1.4	2-3	107	Lot (6 spots)	Beautiful trail, views of creek, ponds, old growth upland forest, Canadian Shield. *Closed March 20 - June 20 to provide space for ecologically sensitive species.	Page 9 or Link to map
Alexander Hope Smith Est. 2008	3.2	1-2	223	Road	Take in the views of the Canadian Shield, mixed forests and wetland. Paddle the river!	Page 10 or Link to map
Thomas C. Agnew Est. 2011	2	1-2	85	Road	200+ native plants (skunk cabbage, pipsissawa, yellow-eyed grass). Rich in reptiles and amphibians. Connection to Turnbull Tract trails.	Page 11 or Link to map
Ron Reid Est. 2017	1.7	2	730	Lot (2 spots)	Walk the trail to Ragged Rapids and spend some time taking in the beautiful Black River. It is buggy in the spring/summer! Black River Road is quite narrow and some parts are rough. No winter access.	Page 12 or Link to map
Sweetwater Farm Est. 2019	2	1	185	Road	Great views of Stickleback stream, diverse landscape of forests, fields, and alvar. Features 25 vegetation communities that are still being documented, and a highly vulnerable aquifer provides significant cold water recharge.	Page 13 or Link to map

Region: Carden

(Wylie Road & Alvar Road can be quite rough depending on the time of year. Winter access is very limited, if at all).

NCC = Nature Conservancy of Canada CAPP = Carden Alvar Provincial Park

Reserve	KM	Rating	Acres	Ⓟ	Why you'll love it here	Map
Kris Starr Sanctuary Est. 2012	1.3	2	100	Road	Great diversity of habitat and species. Views of the Head River, mixed forest and wetlands.	Page 14 or Link to map
Sedge Wren Marsh (CAPP) Est. 2014	1.5	1	1,600	Lot (6 spots)	Stand on the platform near the river and listen for frogs, birds and more! Grasslands, alvars, shrub lands, wetlands and mixed forest.	Page 15 or Link to map
Cameron Ranch (CAPP) Est. 2014	3	1	2,869	Lot (6-8 spots)	Bring your binoculars to see an abundance of unique species in this Important Bird & Biodiversity Area.	Page 16 or Link to map
Prairie Smoke Alvar (NCC)	2 & 2.5	1	678	2 parking lots	Two trails: Little Bluestem Trail & Prairie Smoke Alvar Trail. Fields, grassland alvar, deciduous forest, and low mossy escarpment.	Page 16 or Link to map
North Bear Alvar (NCC)	3.5	1	787	Road	Mix of extensive grassland, shrub and treed alvars that support unique species.	Page 17 Or Link to map



VISITOR GUIDELINES

This Nature Reserve and 44 others are protected and cared for by The Couchiching Conservancy and supporters. Together we are dedicated to protecting nature for future generations - for our community, wildlife and the health of our planet. There are a few simple and clear rules as a visitor to this place for everyone's benefit and remember, this is a private nature reserve made possible by the community support of donors. **Please treat this nature reserve as a gift.**

DO

- Enjoy the trail with friends and family
- Enjoy 'passive recreation' such as walking, birding, snowshoeing
- Stay on the trail
- Take photos and take any garbage home
- Make a booking with the office for groups, classrooms or photography sessions

DO NOT

- Let any pet off leash. This damages the reserve, and is disrespectful of wildlife and other visitors
- Take anything from the forest, this is poaching. *This includes mushrooms, flowers, berries sticks, etc*
- Release any wildlife you have caught
- Litter – take home anything you bring and pick up after your pet

GET INVOLVED

Sign up for our
newsletter



Visit our
Website



Make a
Gift for nature



News &
Events



IMPACT



14,400+
ACRES
PROTECTED



300+
ENGAGED
VOLUNTEERS



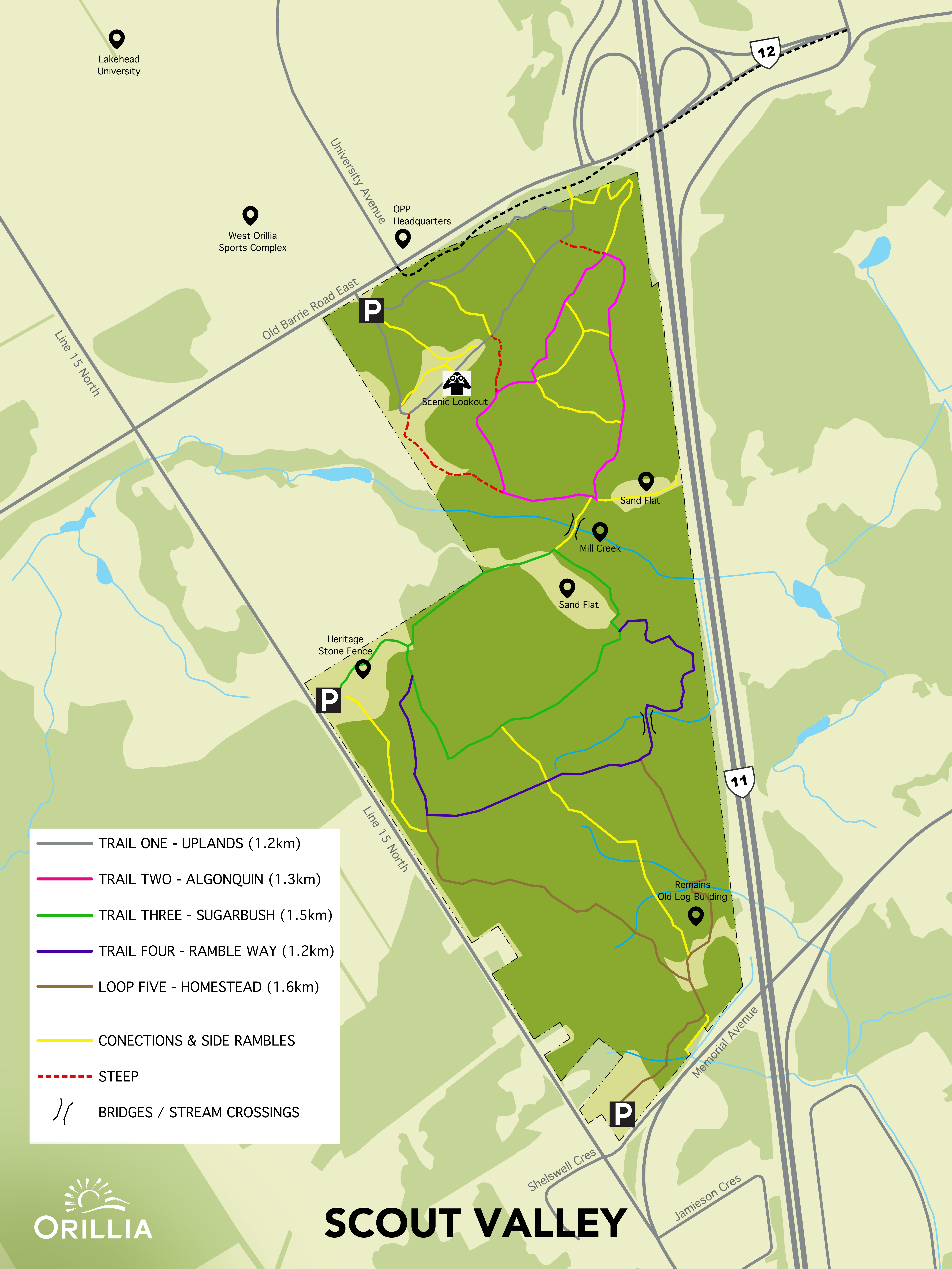
23.5 km
OF TRAILS
MANAGED



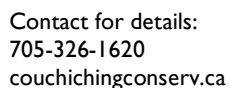
9
COMMUNITY
SCIENCE PROJECTS

PROTECTING NATURE FOR
FUTURE GENERATIONS

with your
help!



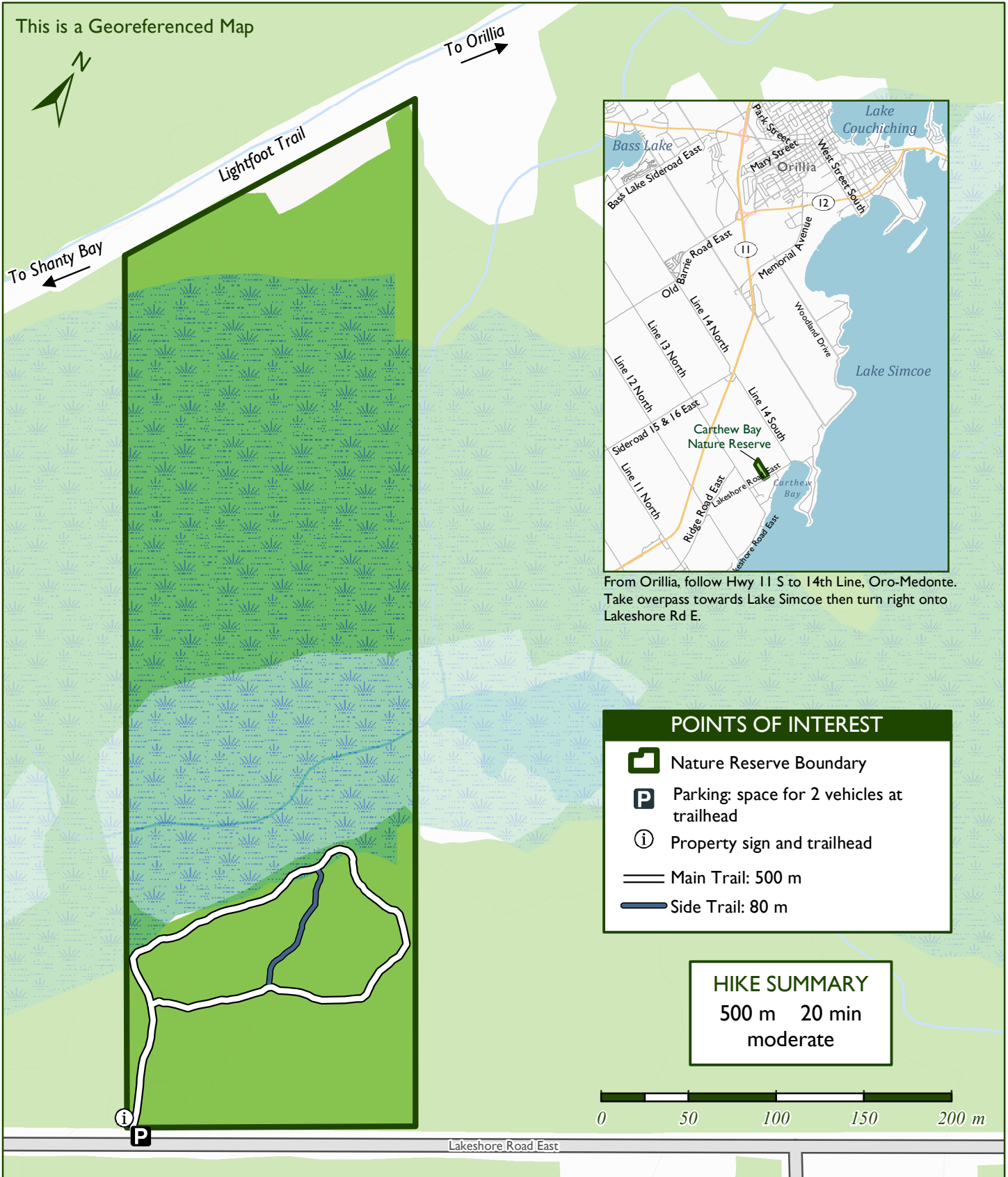
- TRAIL ONE - UPLANDS (1.2km)
- TRAIL TWO - ALGONQUIN (1.3km)
- TRAIL THREE - SUGARBUSH (1.5km)
- TRAIL FOUR - RAMBLE WAY (1.2km)
- LOOP FIVE - HOMESTEAD (1.6km)
- CONECTIONS & SIDE RAMBLES
- - - STEEP
- }/ BRIDGES / STREAM CROSSINGS



Map created by The Couchiching Conservancy on July 13, 2022. Coordinate System: NAD 1983 UTM Zone 17N. Projection: Transverse Mercator
Datum: North American 1983. Data Sources: Geohub Land Information Ontario (2020), Couchiching Conservancy (2021). Contact for details.



Carthew Bay Nature Reserve



From Orillia, follow Hwy 11 S to 14th Line, Oro-Medonte. Take overpass towards Lake Simcoe then turn right onto Lakeshore Rd E.

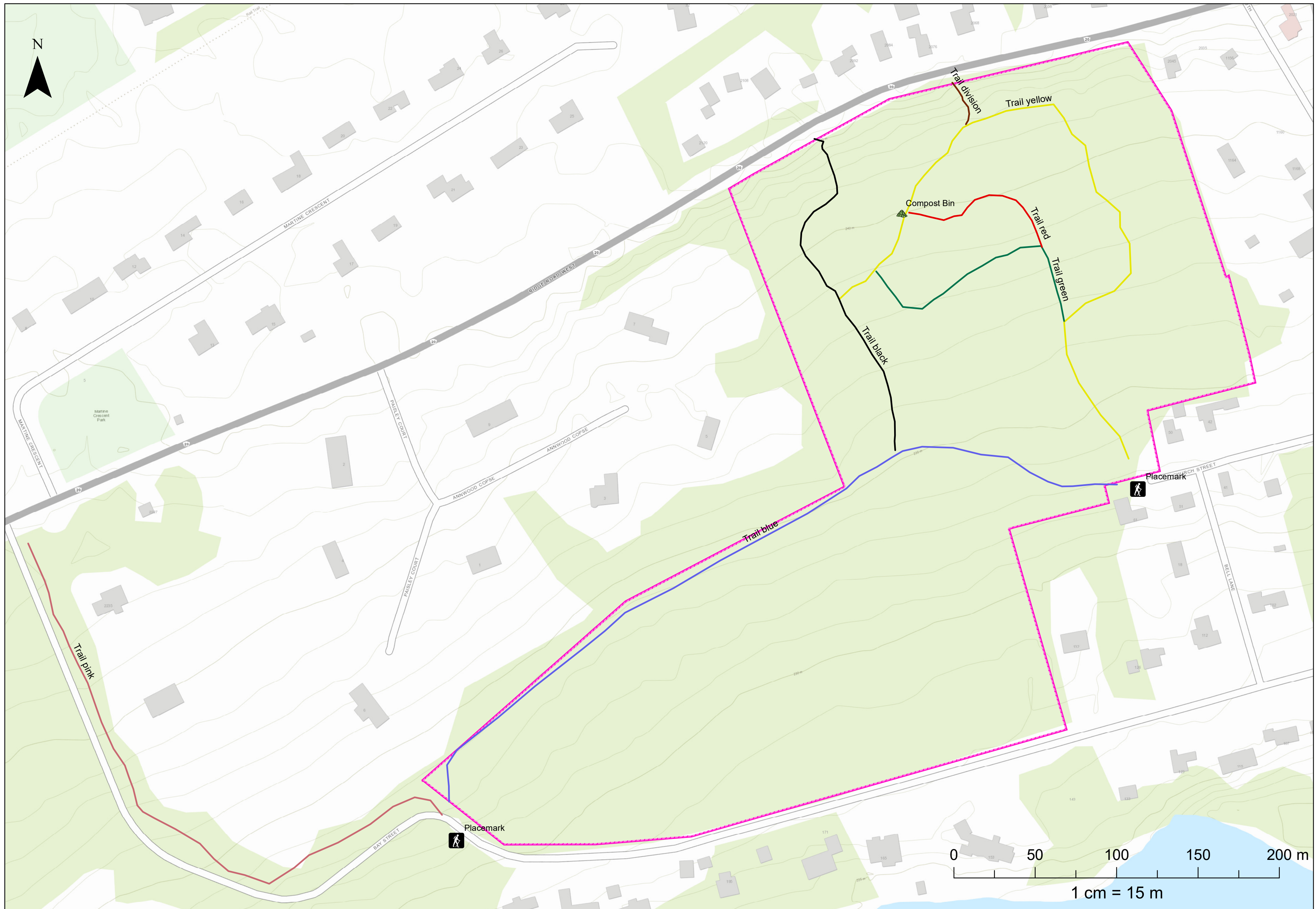


Scan QR code:
C.C. properties
webpage

We recognize that the Couchiching Conservancy operates within the territory of the Indigenous Peoples of Treaty 18, Lake Simcoe - Nottawasaga and The Williams Treaties.
This map is not a plan of survey. Do not use for planning or legal purposes. Do not rely on map for navigation.
Created by the Couchiching Conservancy, July 9, 2021. Coordinate System: NAD 1983 UTM Zone 17N. Projection: Transverse Mercator. Datum: North American 1983.
Data Sources: Couchiching Conservancy (2021). Contains information licensed under the Open Government Licence – Ontario. Contact for details.

Contact for details:
705-326-1620
couchichingconserv.ca

Church Woods

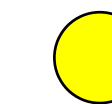




NATURE
CONSERVANCY
CANADA

EAST COULSON SWAMP TRAIL MAP

LEGEND



You are Here



Trail Access



Road



Stream



Waterbody



Wooded Area

Trail Network



Trail Loop (1270 m)



Wetland Lookout (60 m)

Conservation Lands



Nature Conservancy of Canada Property



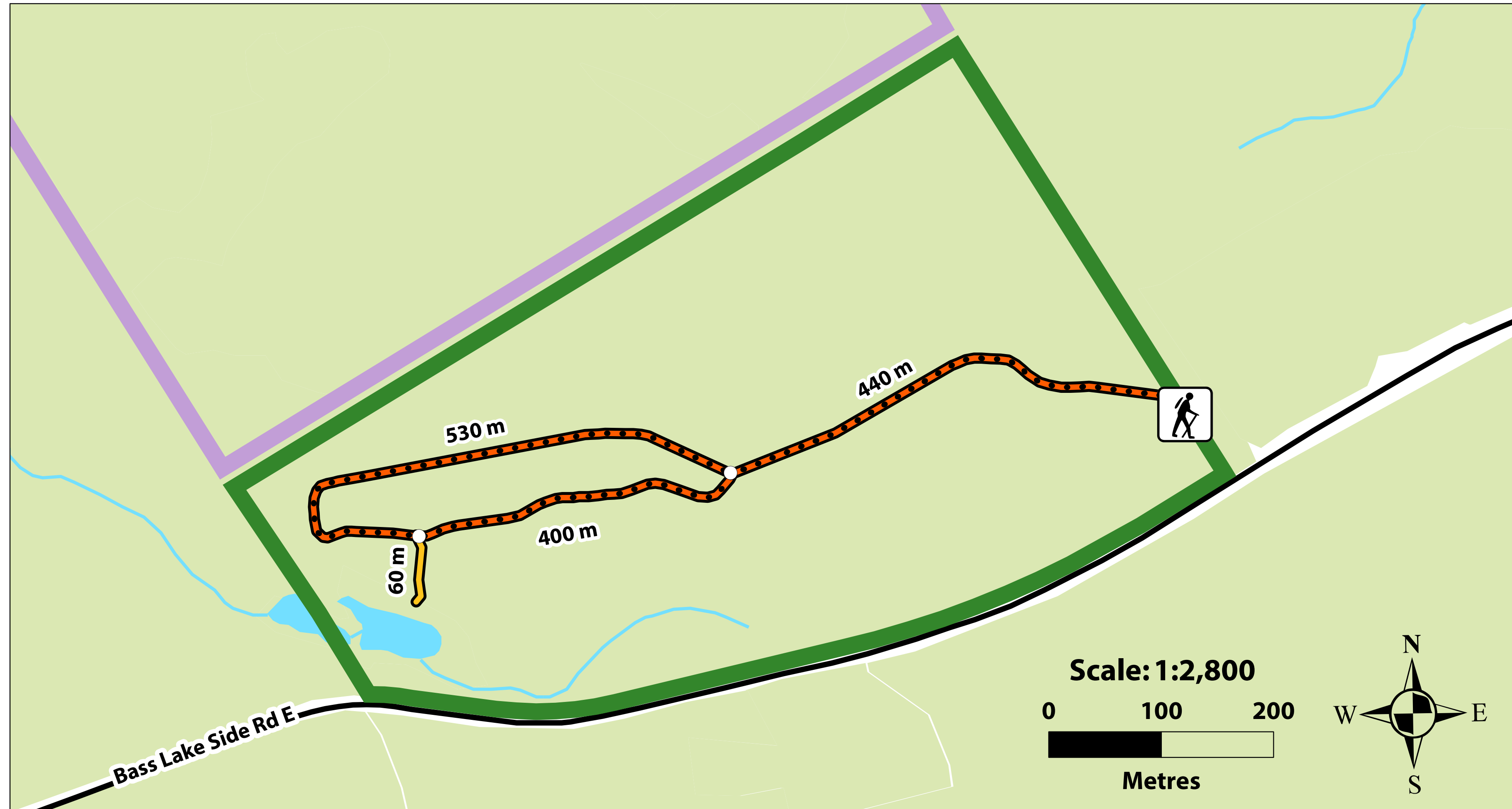
Other Conservation Lands

Disclaimer:

This map is illustrative only. Do not rely on it as being a precise indicator of privately-owned land, routes, locations of features, nor as a guide to navigation. This map may contain omissions or errors. Not survey grade.

Data Sources:

Nature Conservancy of Canada - Ontario Region, 2021
Ontario Ministry of Natural Resources and Forestry, 2021



ADAMS NATURE RESERVE



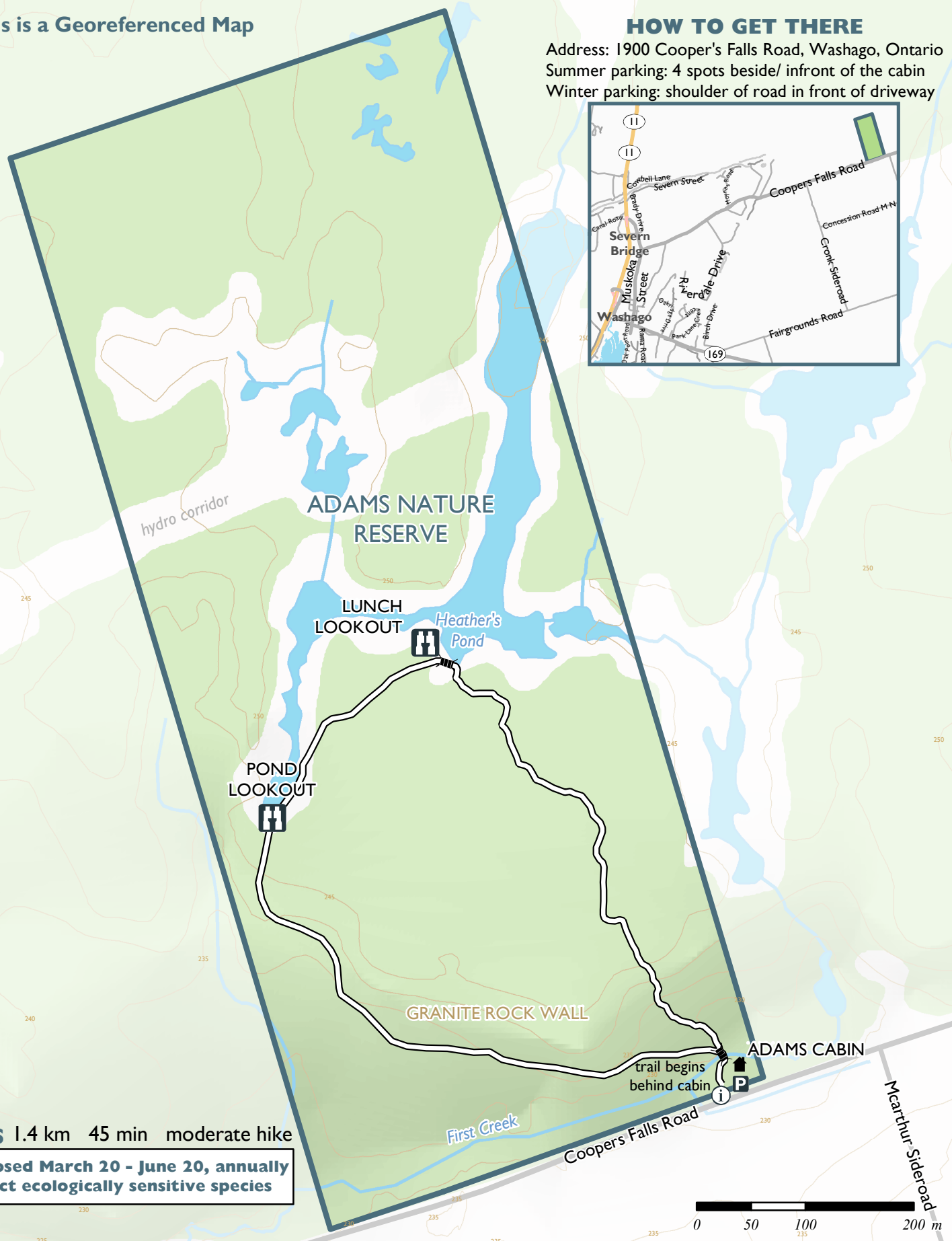
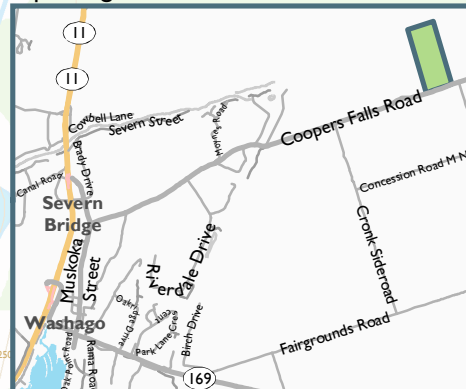
This is a Georeferenced Map

HOW TO GET THERE

Address: 1900 Cooper's Falls Road, Washago, Ontario

Summer parking: 4 spots beside/ in front of the cabin

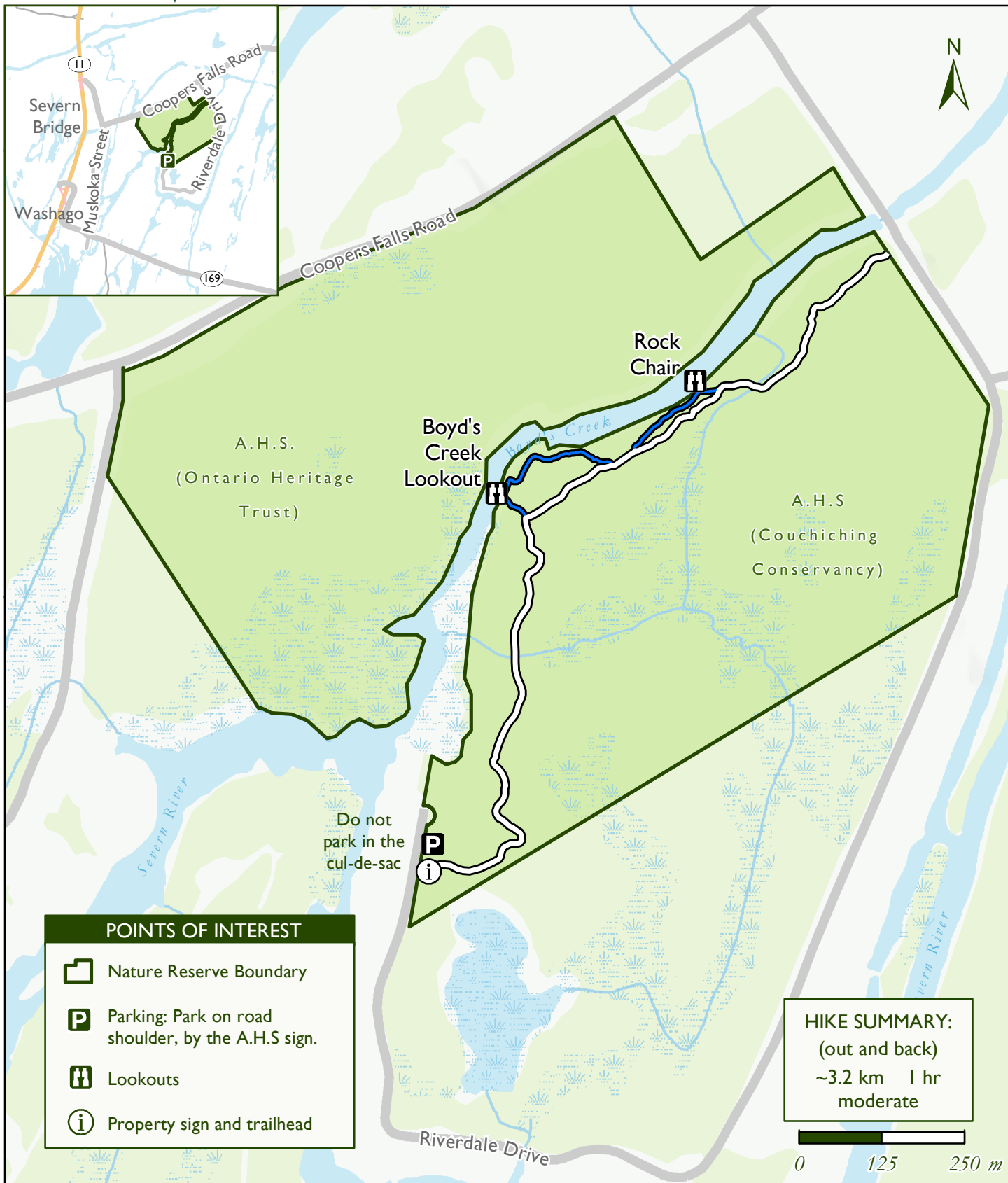
Winter parking: shoulder of road in front of driveway



TRAILS 1.4 km 45 min moderate hike

Trails closed March 20 - June 20, annually to protect ecologically sensitive species

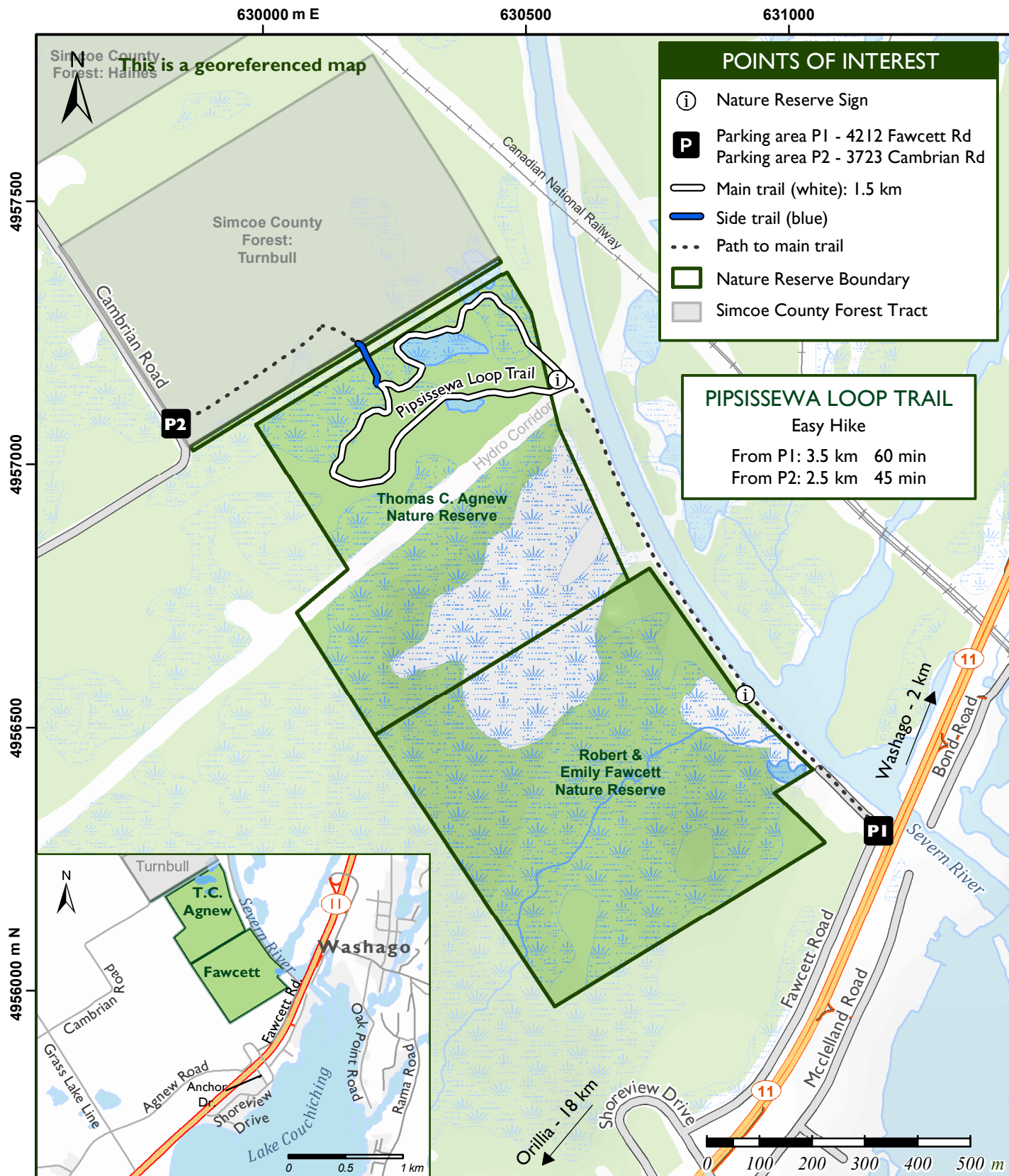
Alexander Hope Smith Nature Reserve

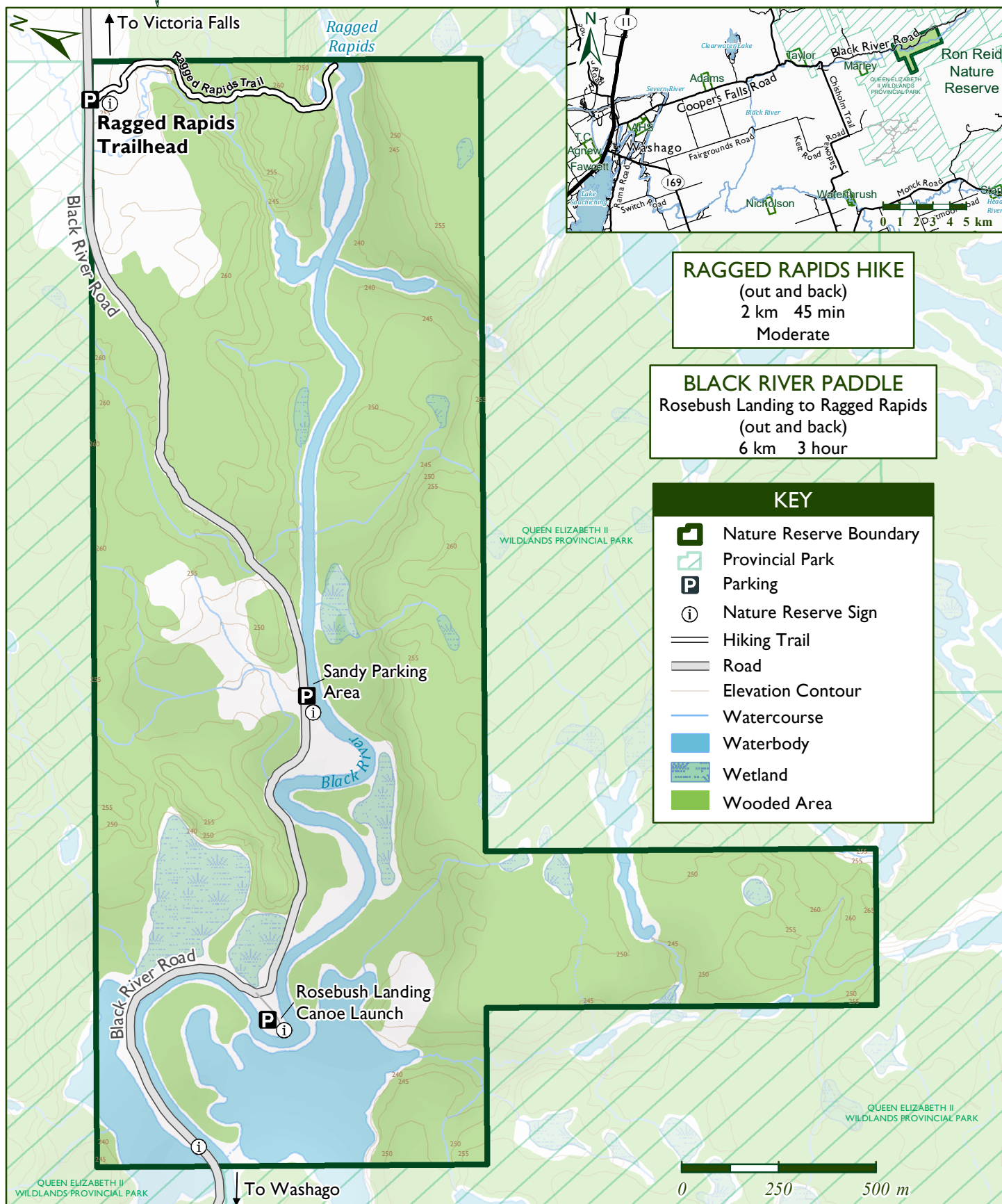


Scan QR code
to view property
webpage

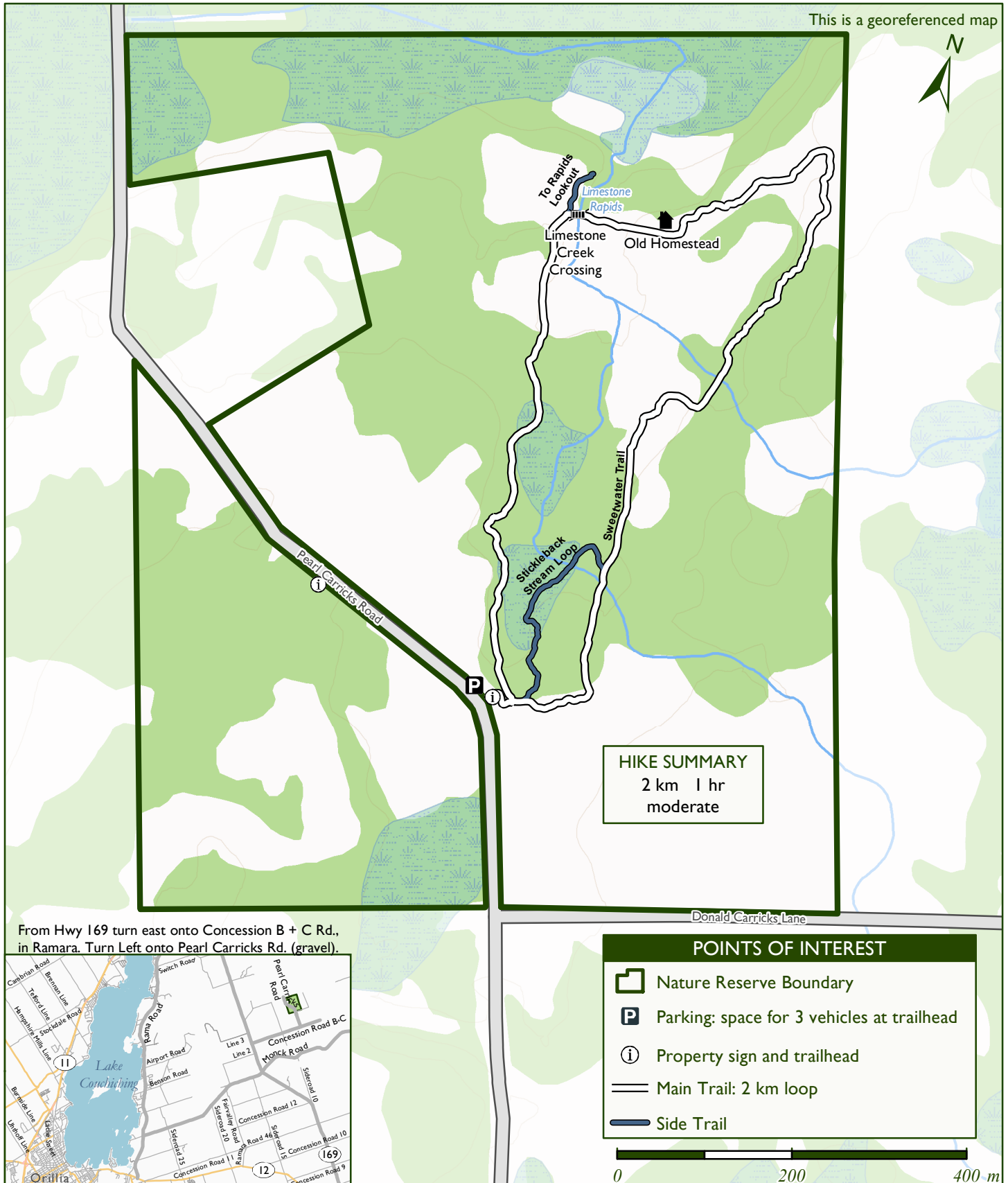
The land on which we operate is the territory of Haudenosaunee, Anishnaabeg, Wendat and Metis Peoples.
This map is not a plan of survey. Do not use for planning or legal purposes. Do not rely on map for navigation.
Created by the Couchiching Conservancy, July 14, 2021. Coordinate System: NAD 1983 UTM Zone 17N. Projection: Transverse Mercator.
Datum: North American 1983. Data Sources: Couchiching Conservancy (2021). Contains information licensed under the Open Government
Licence – Ontario. Contact for details.

Contact for details:
705-326-1620
couchichingconserv.ca





Sweetwater Nature Reserve



Contact for details:
705-326-1620
couchichingconserv.ca

The land on which we operate is the territory of Haudenosaunee, Anishnaabeg, Wendat and Metis Peoples.
This map is not a plan of survey. Do not use for planning or legal purposes. Do not rely on map for navigation.
Created by the Couchiching Conservancy, July 9, 2021. Coordinate System: NAD 1983 UTM Zone 17N. Projection: Transverse Mercator.
Datum: North American 1983. Data Sources: Couchiching Conservancy (2021). Contains information licensed under the
Open Government Licence – Ontario. Contact for details.

Scan QR code :
C.C. properties
webpage



The Kris Starr Sanctuary

Marked Trails:

Total Trail: 1.3 km

– Boundary Line



All Couchiching Conservancy trails are easy to moderate.

17 Turner Rd, Sebright, ON L0K 1W0

Sedge Wren Marsh Trail

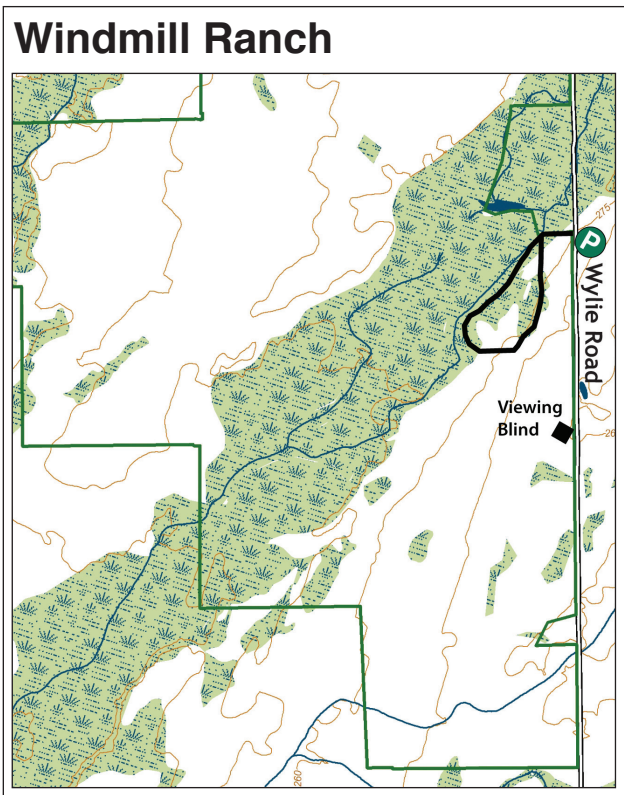
Access: From parking area on Wylie Road, just south of Sedge Wren Marsh

Trail length: + 1.5 km loop

Difficulty: Easy walking; may be wet in spots

Points of interest: Most of the trail is in coniferous woodland with large white cedar and white spruce trees. Trail follows the edge of Sedge Wren Marsh and beaver pond, with American Bittern, Swamp Sparrow, Kingfisher, and other wetland species. Forest has Black-throated Green Warbler, Pileated Woodpecker, Hermit Thrush.

Cautions: Poison Ivy is abundant in places; wear protective clothing.



Experience Carden Alvar on Foot

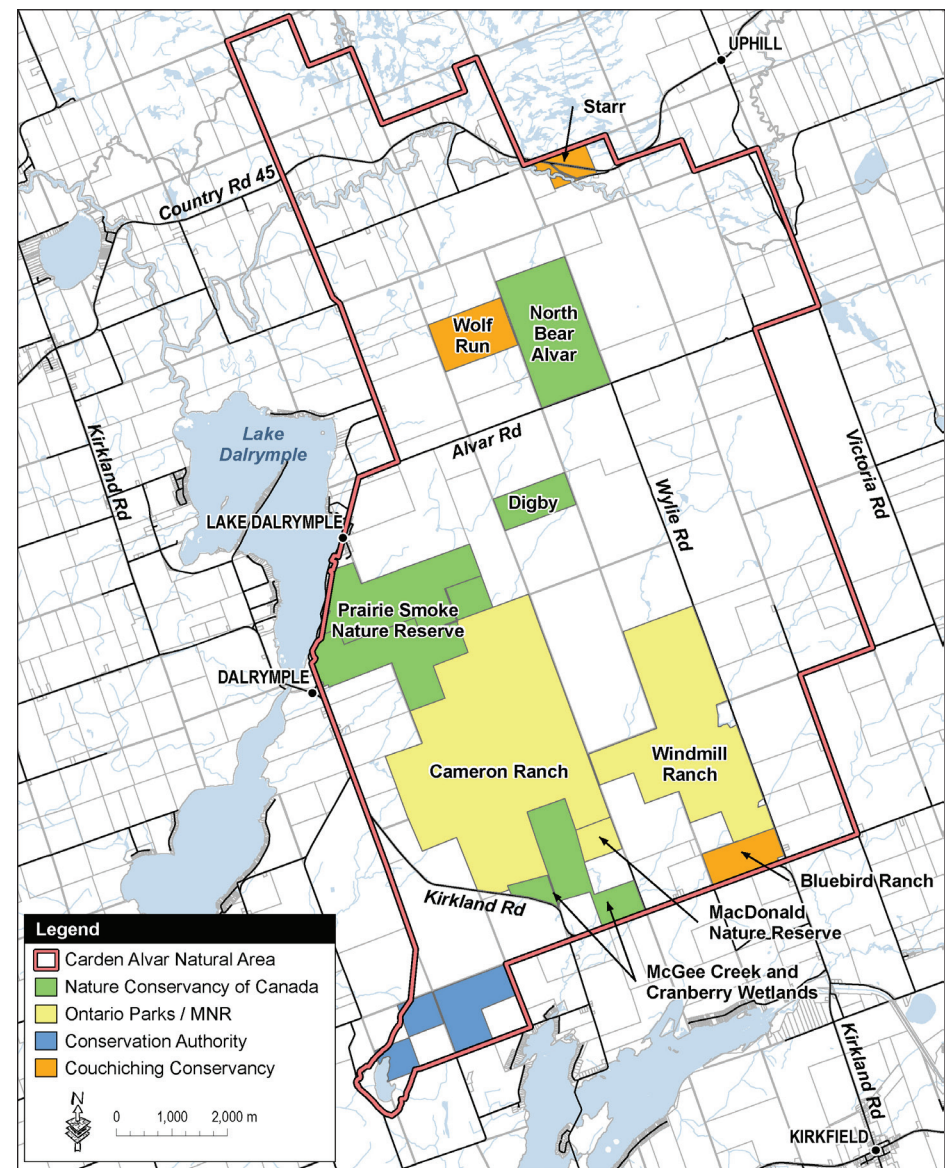
Walking Trails for Public Use

Opportunities for Birders, Hikers & Naturalists



New Options for Your Visit to the Carden Alvar

Many visitors to the Carden Alvar focus on the county roads such as Wylie Road, where you can see many birds and alvar flowers right from your car. This has caused over-crowding and sometimes conflicts with local landowners who are concerned that visitors may not respect their private property.



In recent years, nature-lovers have helped purchase large tracts of alvar in Carden, through projects headed by Nature Conservancy of Canada, Couchiching Conservancy, Ontario Parks, and other organizations.

As a starting point, four trails have been developed to allow you to leave the roadsides and more fully experience the natural charms of the Carden Alvar. Please enjoy responsibly. Keep dogs on leash. No motorized vehicles.

- Remember:**
- Most land in Carden is private and is strictly off-limits to trespass.
 - Always be courteous to other users of local roads — don't block traffic, climb fences, or spook cattle in nearby fields.
 - Interior areas of Carden are remote and often very hot in summer, so plan ahead.

Produced with the assistance of the Ontario Trillium Foundation, an agency of the Government of Ontario.

Cameron Ranch

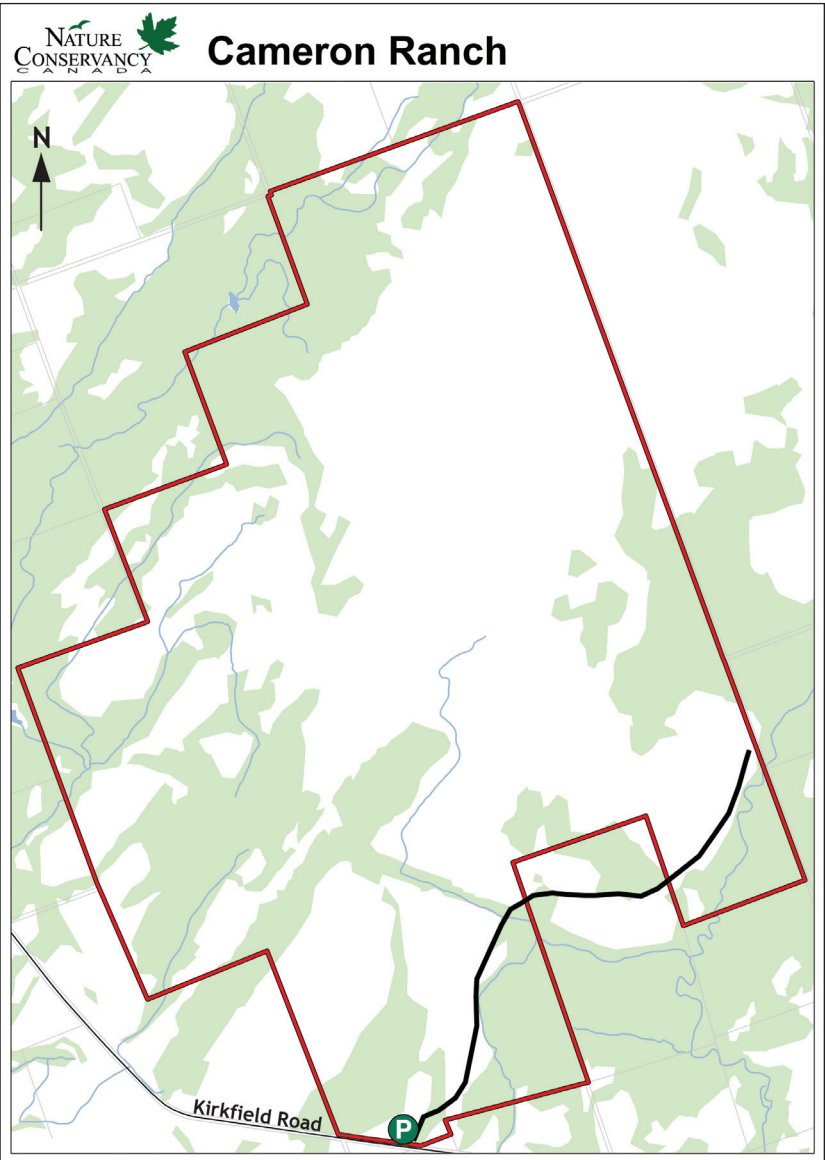
Access: Parking lot on CKL Road 6
Trail length: 3 km
Difficulty: Mostly easy walking, boardwalks across wet areas

- Points of interest:**
- Interpretive panels on grassland birds and grazing.
 - Wooded wetland and wet meadows support abundant frog song in April-May; listen for Chorus Frogs, Wood Frogs.
 - Hawthorns west of the fence often have Loggerhead Shrike.
 - Good populations of Brown Thrasher, Northern Flicker, Upland Sandpiper and other typical Carden birds.
 - Many alvar plants along the trail: Fragrant Sumac, Tufted Hairgrass, Early Buttercup.

Cautions: **Poison Ivy in places; very limited shade so bring drinking water; do not cross the fence.**

The nearly 3000 acres of Cameron Ranch will become part of Carden Alvar Provincial Park, with an emphasis on protecting its alvar communities, extensive grasslands and shrublands, wetlands, and many rare species. Part of this trail also crosses the McGee Creek and Cranberry Wetlands Nature Reserve protected by Nature Conservancy of Canada.

A significant part of Ontario’s population of endangered Eastern Loggerhead Shrikes nests on this property. Since short to medium grass



conditions are critical for this species and other grassland species such as Horned Larks and Upland Sandpipers, continued cattle grazing is an important management tool. Upgraded fencing and water supplies, using solar and wind power, allow us to manage grazing pressure to provide optimum habitat conditions.

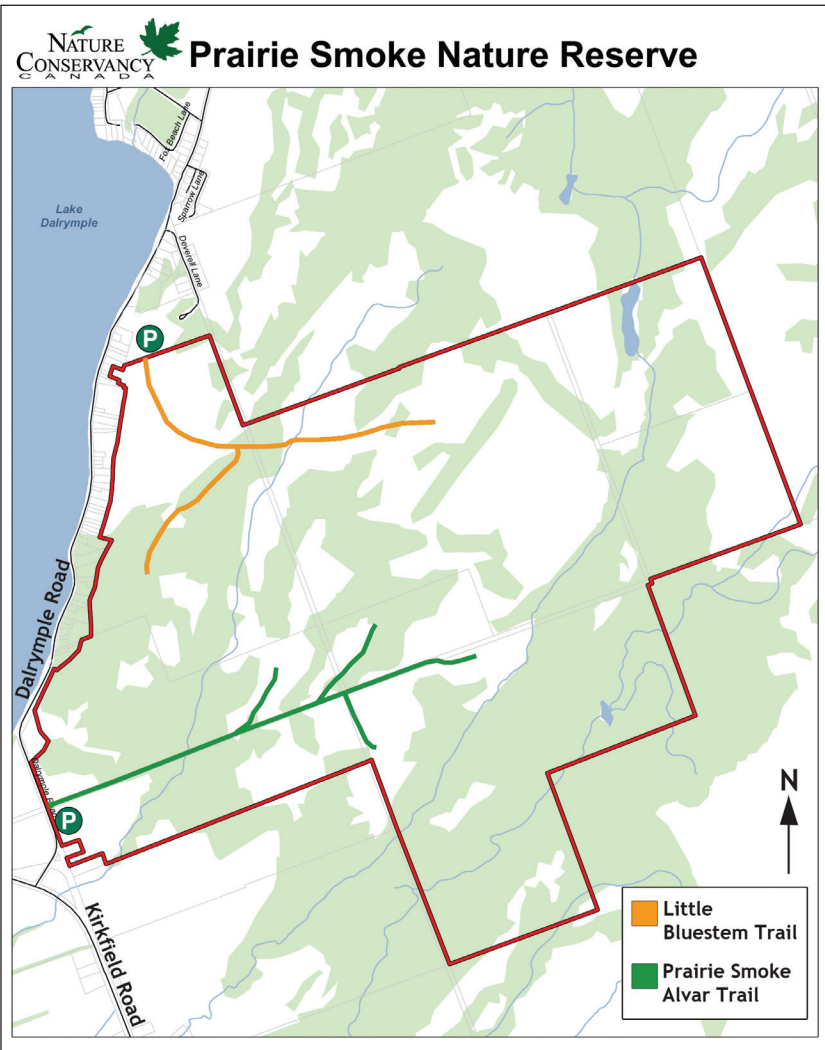
Little Bluestem Trail

Access: South from parking area at Carden Recreation Centre, Dalrymple Road
Trail length: + 2 km
Difficulty: Mostly easy walking, but can be wet in several sections
Points of interest:

- Overgrown fields with sparrows, Catbirds, and Goldfinches.

- A limestone escarpment with several springs and conifer forests on shallow bedrock.
- Extensive areas of Little Bluestem grassland alvar, with Tufted Hairgrass alvar in wetter areas.

Cautions: **Poison Ivy abundant in places; may be wet underfoot except in summer; easy to lose your way if off the trail.**



Prairie Smoke Alvar Trail

Access: From parking area on Dalrymple Road, 200 m north of CKL Road 6; cross hayfield to start
Trail length: + 2.5 km **Difficulty:** Easy walking; main trail is on unopened road allowance

- Points of interest:**
- Deciduous forest with Butternut.
 - Low mossy escarpment with many ferns.
 - Very diverse alvar communities with Indian Paintbrush, Prairie Smoke, Rock Sandwort, Hairy Beardtongue.
 - Osprey nest on old windmill.
 - Alvar interpretive panels.

Cautions: **Poison Ivy in places; snowmobile use on main trail in winter; deer hunting in fall; easy to lose your way if off the trail.**

