



---

Greetings!

The start of summer is approaching and with it, warmer weather. If you have not completed all of your frog monitoring visits yet, there is still time. Take a look at the upcoming weather forecast and plan accordingly. The biting bugs have been pretty bad at some locations, so don't forget your bug jackets! Thanks to everyone who have braved the bugs in the name of data collection.

Whether you are using paper or Landscape, please email me to let me know when you submit your data so that I know to look for it. We have 3 upcoming drop-in Zoom help session for anyone who is looking for advise on monitoring and data submission.

Do not hesitate to get in touch with questions or concerns, or if you would like a staff member to accompany you for monitoring.

Thank you,

Aiesha

Having trouble viewing this email? [View as Webpage](#)

---

## Useful Resources and Links

### Resources for monitoring:

- [Printable Monitoring Form](#)
- [Landscape Online Portal](#) - submit data online (optional)
- [Landscape Guide for Frog Monitors](#) - a step-by-step guide
- [Volunteer Resources Page](#)

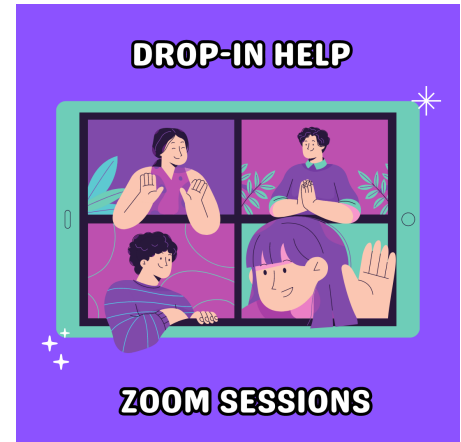
Incase you missed it: [May 2023 Newsletter](#)

## Frog Monitoring Help Zoom Sessions

Do you have questions about planning visits or submitting data? Get answers by attending one of our drop-in help sessions:

**Friday June 16th, 9 am - 10 am**  
**Friday June 23rd, 12 pm - 1 pm**  
**Friday June 30th, 12 pm - 1 pm**

The Zoom link is the same for all 3 sessions:  
<https://us02web.zoom.us/j/86050619842?pwd=Yk1qdDNmWmsyVlVob3VDRE9YMUtwUT09>



If you would like to set up a different time or if you would like to meet at the Couchiching Conservancy office, let me know ([aiesha@couchconservancy.ca](mailto:aiesha@couchconservancy.ca)).

## Frogs and Fire

The recent wildfires made me wonder - "How do wildfires impact frogs?"

Studies from Australian wildfires found that the impacts varied with frog species, habitat, habitat connectivity, fire severity, and more ([source 1](#), [source 2](#)).

Smoke from the fires could cause respiratory issues, make it harder to see/smell, and induce fear-based responses in some animals. But not much is known about the impacts of wildlife smoke on frogs.



Copeland Forest wetland  
photographed by Shirley M.

Did you notice a difference in frog calling activity during days with poor air quality? [Let us know](#)

## Notes from the field

Highlights from recent frog monitoring reports:

- Karen heard green frogs and bullfrogs calling at Alexander Hope Smith Nature Reserve



Above: Madeleine and Jade frog monitoring at Cameron Ranch

- Kim and Mike heard spring peepers and green frogs calling at Adams Nature Reserve. They also heard the splashing of a beaver patrolling the area.
- Shirley and Jane heard gray treefrogs, green frogs, and spring peepers at Copeland Forest. The mosquitoes were out in full force.

[Read more notes from the field](#)

## Merch

We now use a platform called Redbubble for our merchandise. Pick the design of your liking and then you get to choose what to put it on! We have T-shirts, mugs, sweaters, tote bags and more! We also have some items available for purchase through our office.



[Click here to view the merch](#)

## Connect with us

- help with EdApp
- help with Landscape
- frog monitoring questions
- species ID
- someone to monitor with



**Aiesha Aggarwal**  
Conservation Analyst  
[aiesha@couchconservancy.ca](mailto:aiesha@couchconservancy.ca)  
Phone: 705-238-1811

**Alysha Henry**  
Youth Stewardship Coordinator  
[alysha@couchconservancy.ca](mailto:alysha@couchconservancy.ca)  
Phone: 705-326-1620

---

**You are receiving this email because you are a Frog Monitor with The Couchiching Conservancy. Please let us know if things have changed and you can no longer volunteer, or do not wish to receive these emails.**

The Couchiching Conservancy | [couchichingconserv.ca](http://couchichingconserv.ca)

